

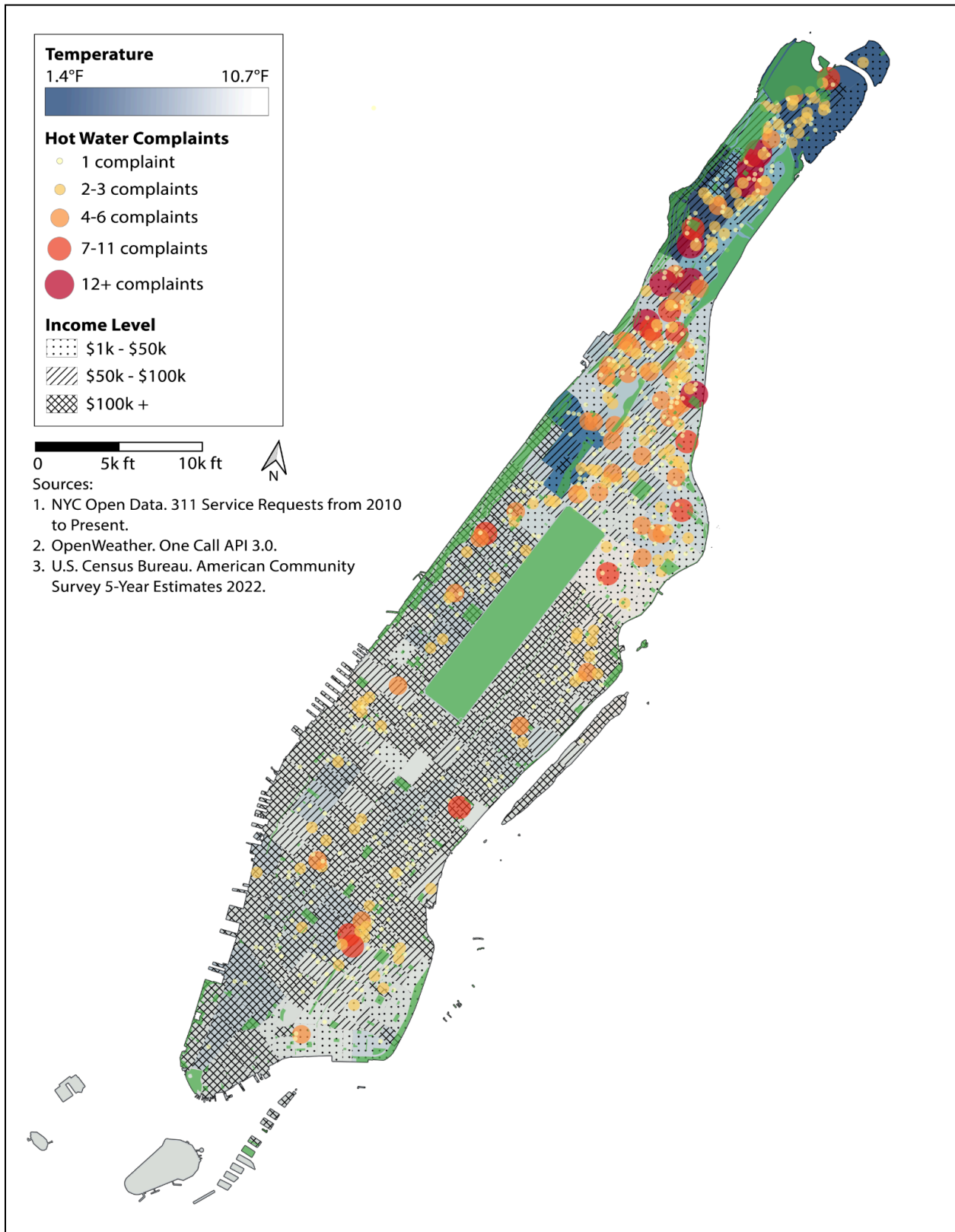
**Aurash Khawarзад**  
**April 28, 2026**

**Map Synopsis: Identifying Cold Vulnerability in Manhattan during Winter 2025/26**

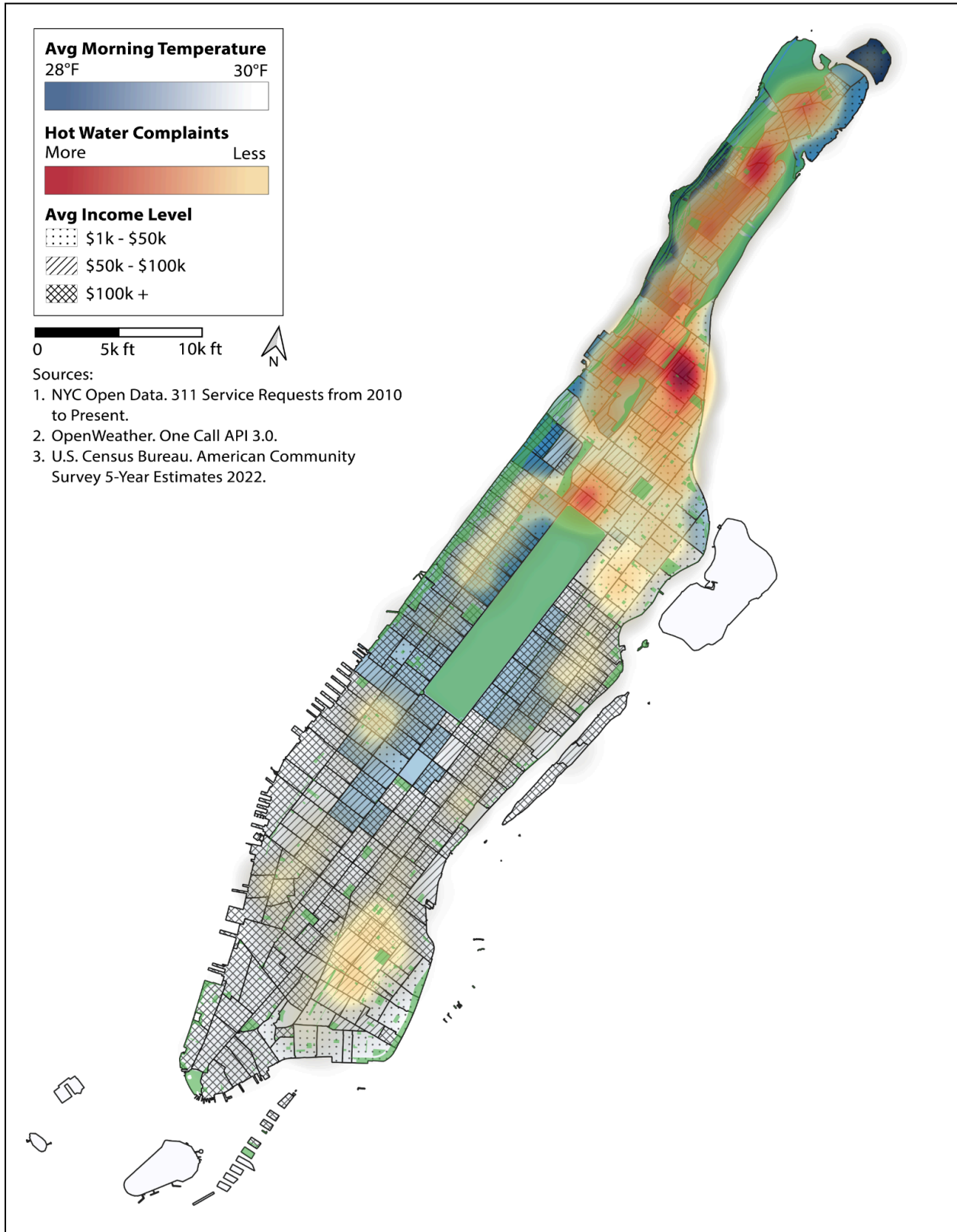
**Table 1. Ten coldest census tracts of winter 2025/6**

Tract	Neighborhood	Mean morning temp °F	Coldest Day °F	Hot Water complaints on Jan 31	Winter hot water complaints
25500	Washington Heights South	28.46	1.40	24	760
27500	Washington Heights North	28.65	1.50	7	286
27100	Washington Heights North	28.65	1.50	6	80
26500	Washington Heights North	28.65	1.50	6	636
26300	Washington Heights South	28.65	1.50	5	627
27300	Washington Heights North	28.68	3.20	3	46
30900	Kingsbridge-Marble Hill	28.81	1.90	3	367
24100	Washington Heights South	28.87	3.40	18	556
24700	Washington Heights South	28.87	3.40	17	400
29500	Inwood	28.99	1.90	15	992

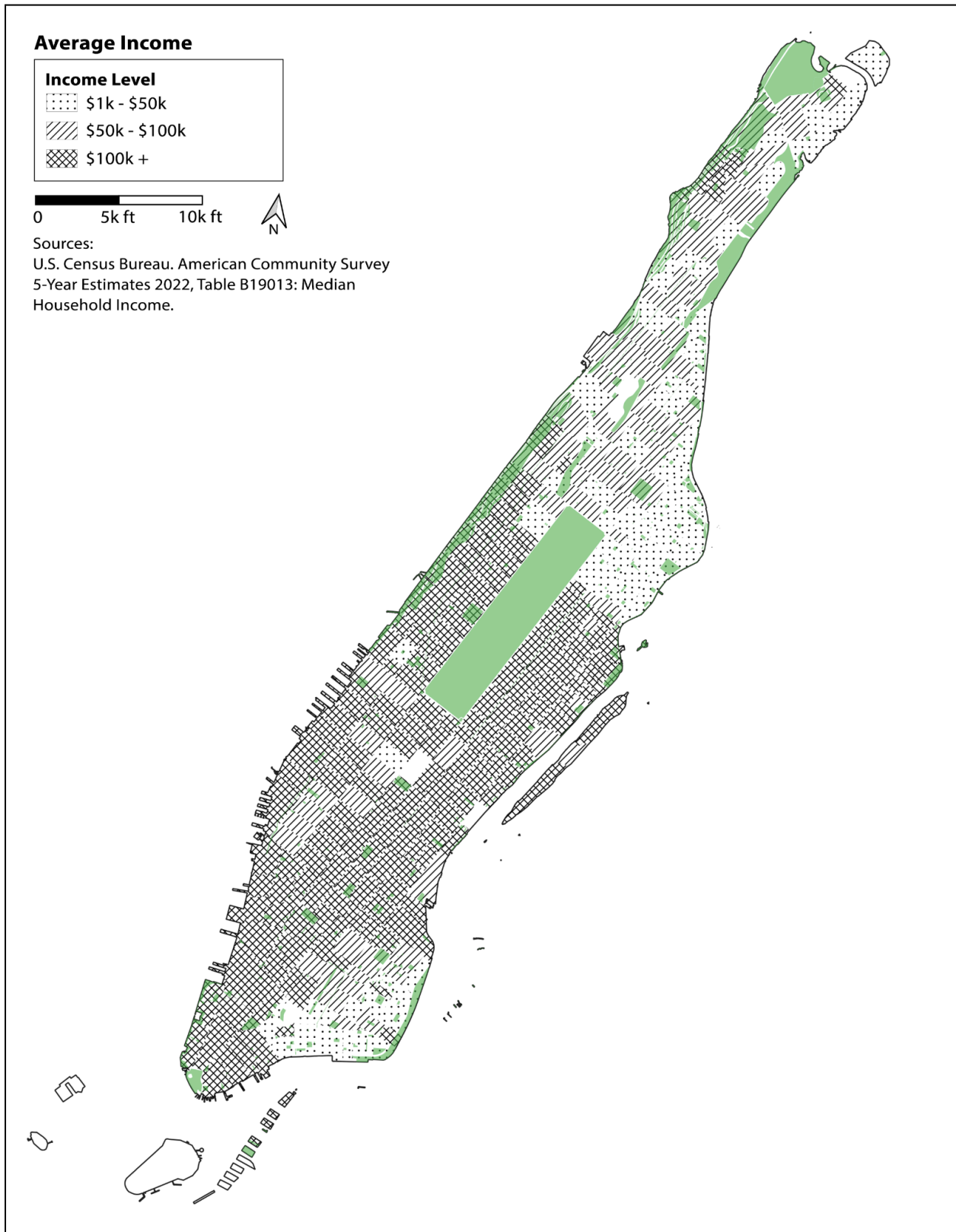
**Map 1: Temperature and Hot Water Complaints on January 31, 2026**



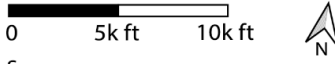
**Map 2. Average Temperature and Total Hot Water Complaints for Winter 2025/6**



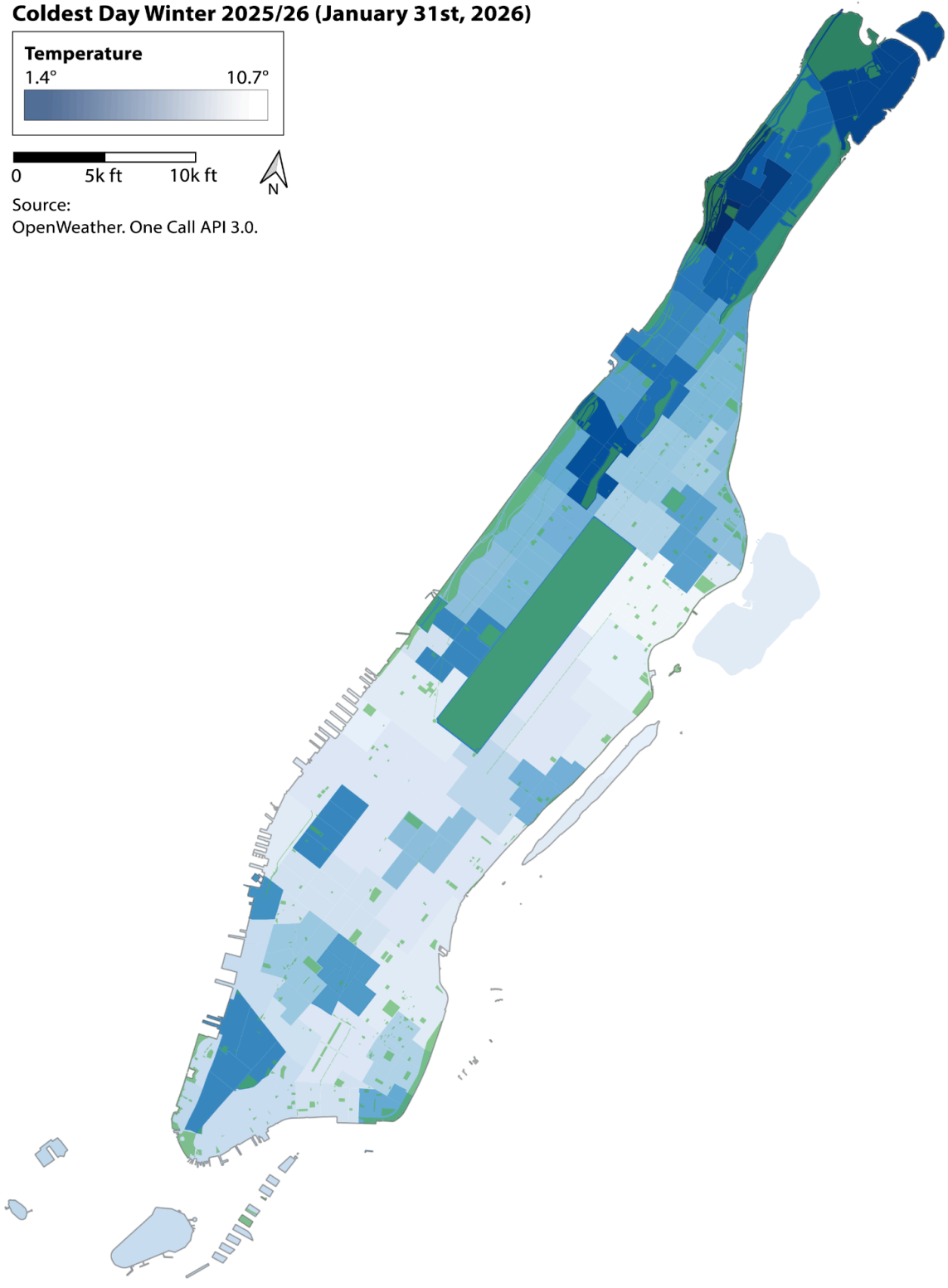
Supplementary maps:



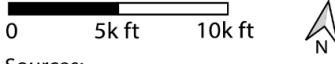
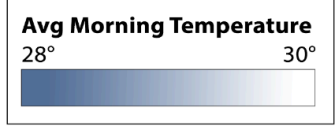
**Coldest Day Winter 2025/26 (January 31st, 2026)**



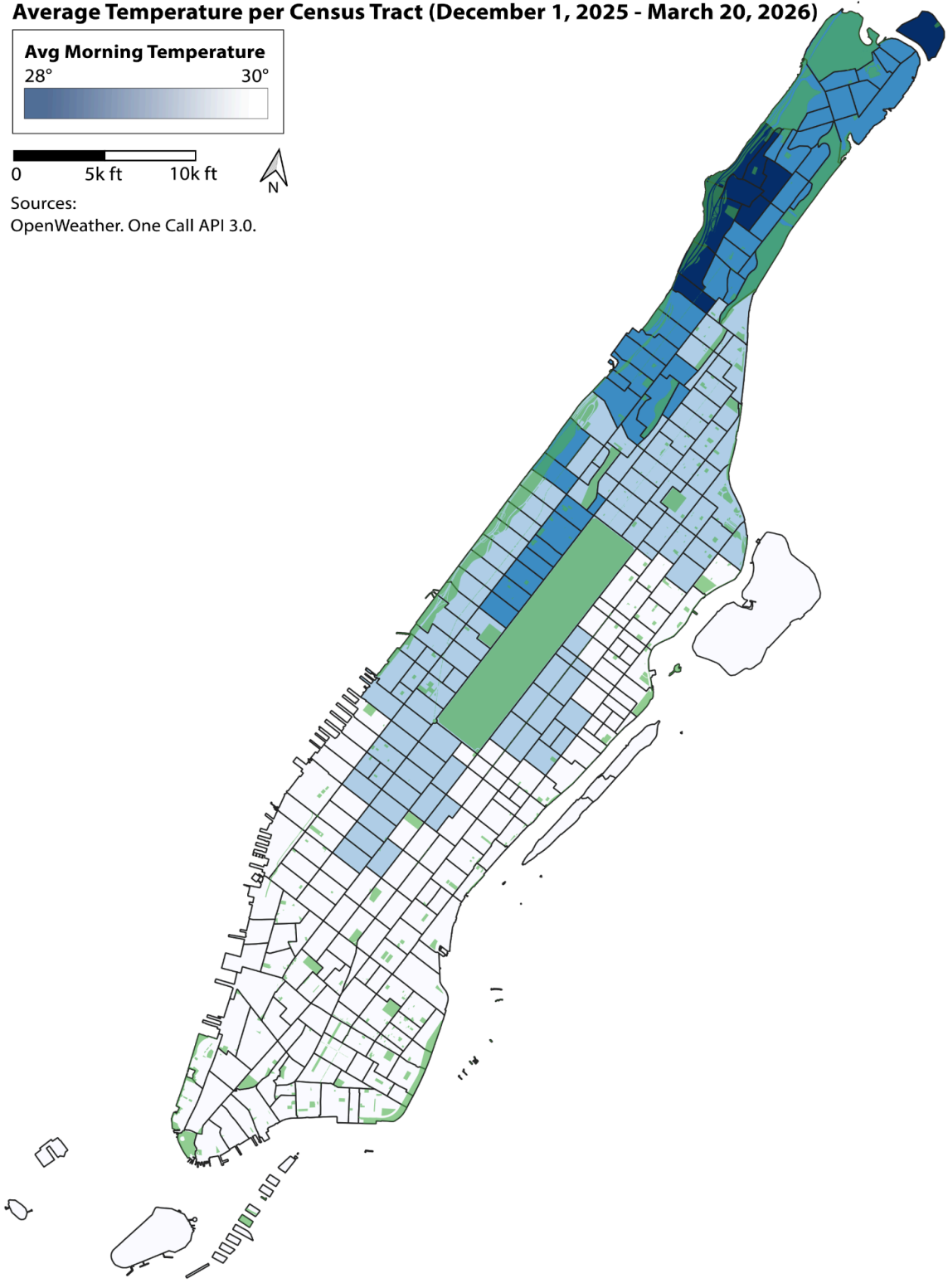
Source:  
OpenWeather. One Call API 3.0.



**Average Temperature per Census Tract (December 1, 2025 - March 20, 2026)**



Sources:  
OpenWeather. One Call API 3.0.



Study time period:

- Total time period: December 1, 2025 - March 20, 2026
- Significant event: January 31st, 2026

Data:

- 102,300 temperature observations total.
  - Temperatures for each census tract recorded at 6:00am, 2:00pm, and 10:00pm.
- Average income per census tract from the US Census, and
- 53,541 hot water outages reported to the 311

Coldest census tract:

- 255.00 in Washington Heights
  - Average morning temperature: 28.46°F
  - Coldest temperature recorded: 1.4°F on January 31st, 2026

Hot water outages reported to 311

- Total over winter: 53,541
- January 31st, 2026: 1,121

**Sources:**

1. NYC Open Data. 311 Service Requests from 2010 to Present.
2. OpenWeather. One Call API 3.0.
3. U.S. Census Bureau. American Community Survey 5-Year Estimates 2022.